
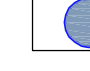


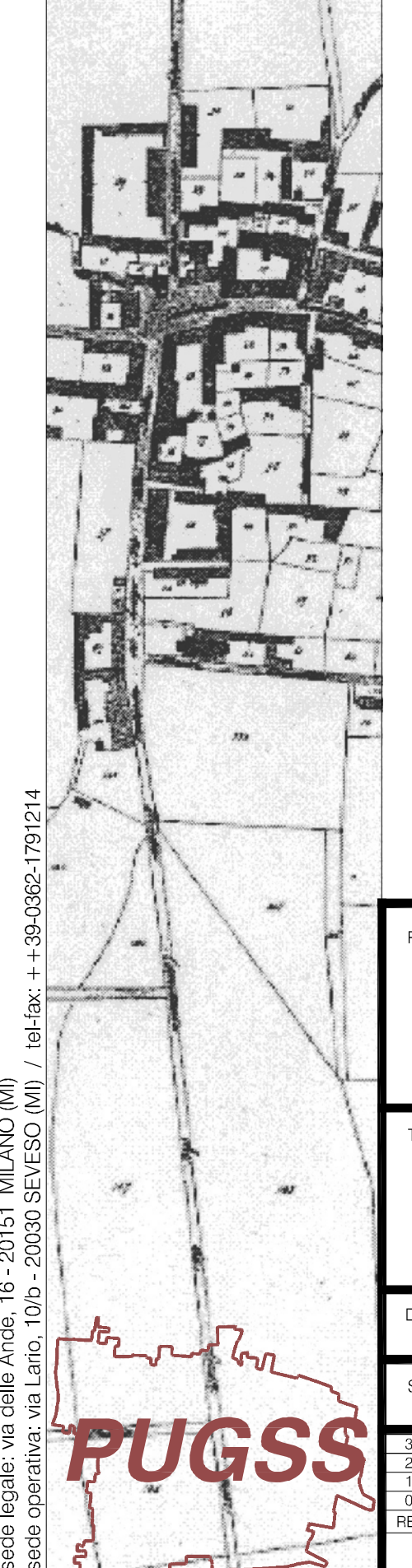
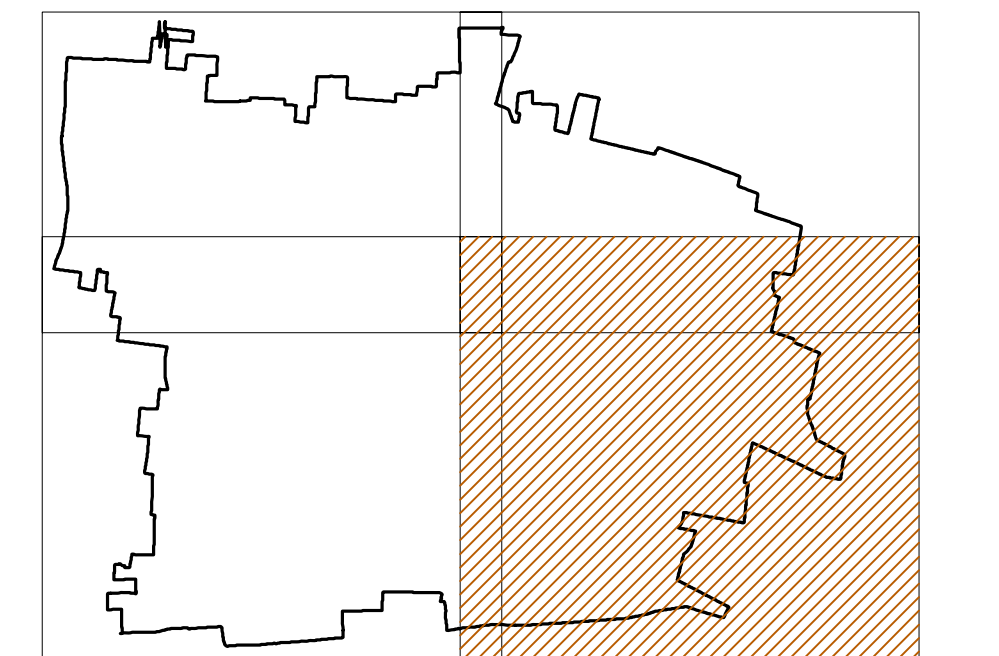


LEGENDA

Rete Acqua potabile

-  TUBAZIONI ACQUA POTABILE
-  POZZI
-  FASCIA DI RISPECTO POZZI - M. 200
-  AMBITO COMUNALE
-  CONFINI COMUNALE



Progetto: **PIANO URBANO GENERALE DEI SERVIZI NEL SOTTOSUOLO**

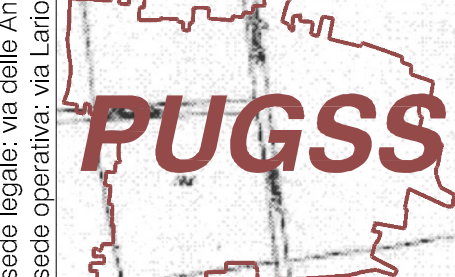
Tratto elaborato: **RETE ACQUA POTABILE QUADRANTI**

Data: **Febbraio 2009** N° elaborato: **R01d**

Scala: **1:2000**

1	2	3	4	5	6	7	8	9	10
0	1	2	3	4	5	6	7	8	9
0	1	2	3	4	5	6	7	8	9
0	1	2	3	4	5	6	7	8	9

BASINICO - ENRICHETTI - ARCHITETTI ASSOCIATI
 STUDIO URBANISTICO E ARCHITETTICO
 VIA S. PIETRO, 10 - 20090 SENAGO (MI) - TEL. 02/90001139/14



REPLICAZIONE IN UNO DEI SECONDI UGELLI E' PROIBITA SENZA IL CONSENSO PRELIMINARE DEL COMITATO DI GESTIONE E CONFERMA DEL PRESIDENTE E DELL'ING.